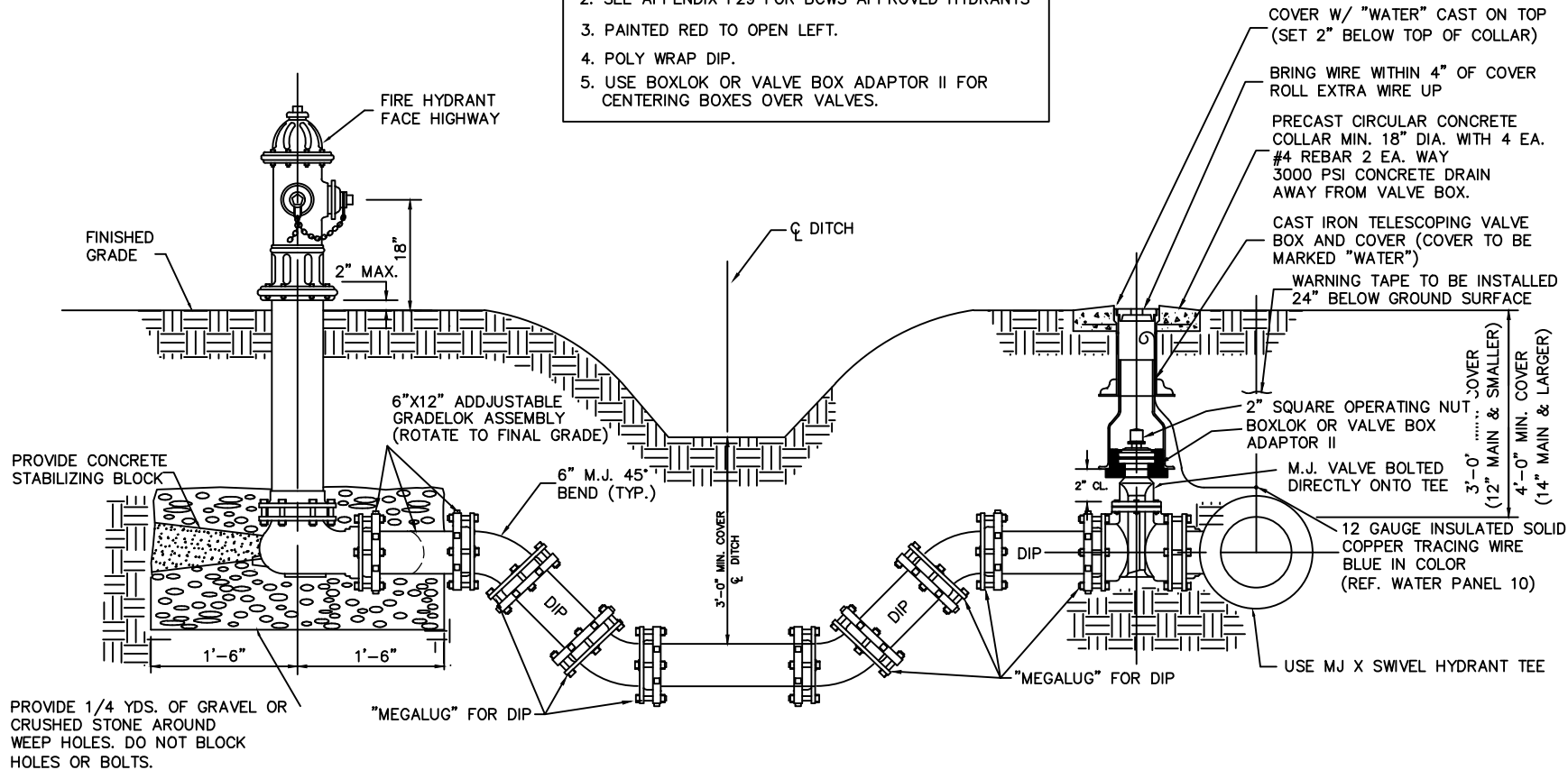


- NOTE:
1. MEGALUG GLANDS SHALL BE USED ON ALL MECHANICAL JOINTS.
 2. SEE APPENDIX F29 FOR BCWS APPROVED HYDRANTS
 3. PAINTED RED TO OPEN LEFT.
 4. POLY WRAP DIP.
 5. USE BOXLOK OR VALVE BOX ADAPTOR II FOR CENTERING BOXES OVER VALVES.



TYPICAL DETAIL
FIRE HYDRANT WITH VALVE AND BOX
FOR DRAINAGE CROSSING

NOT TO SCALE

WATER PANEL 4B

BERKELEY COUNTY WATER AND SANITATION
 POTABLE WATER & SANITARY SEWER STANDARDS
 REVISED 04/25/2023